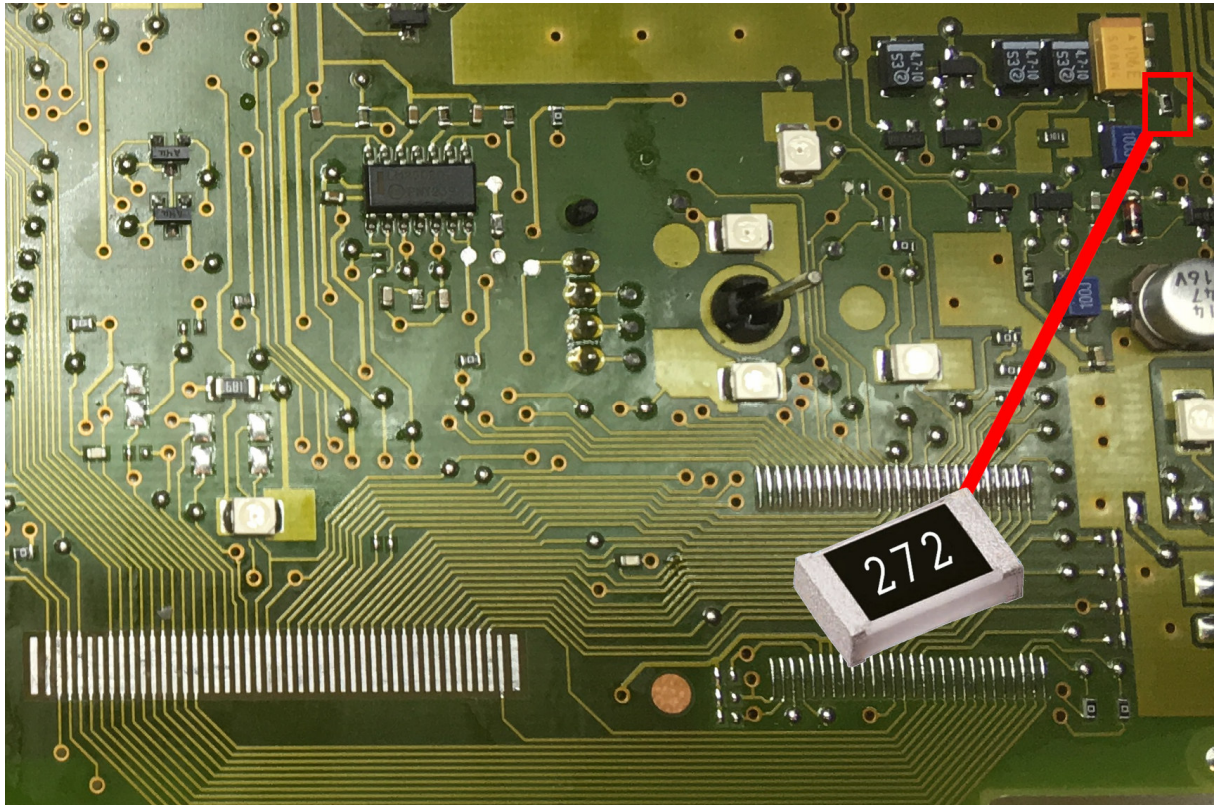
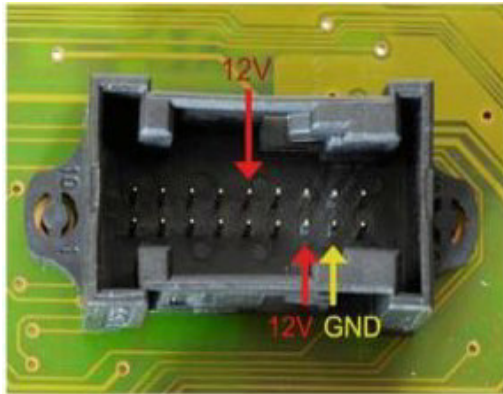


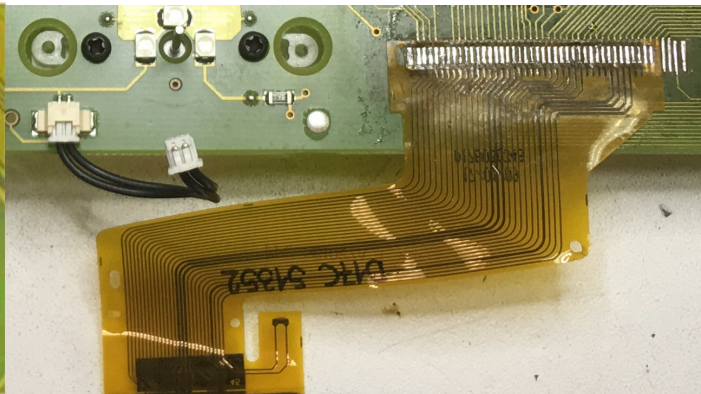
## Installation info LCD Display Mercedes W639 Vito, Viano & Sprinter



Picture 1



Picture 2



Picture 3

1. Disassemble the instrument cluster
2. Remove the faulty display with a hot air blower
3. Thoroughly clean the board
4. Position the connection foil from the display as in the picture and solder it in (Five contacts remain free from the right). (see Picture 3)
5. Replace the shown resistor with one of the included 2,7k Ohm resistors. (see Picture 1)

**Installation only by specialized personnel, otherwise no guarantee!**

Mobil: +49 179 73 888 39  
Mobiler Kfz-Elektronik Service  
[www.kfz-ecu-service.de](http://www.kfz-ecu-service.de)